

# EVERGREEN NEWS

## AUGUST 2010



### Office Hours:

Monday - Friday, 8:30 AM - 4:45 PM

Saturday - 9:00 AM - 2:00 PM

### Summer Gate Schedule:

All Gates Open Mon.-Sat. 7:30, Sun. 8:30 AM

Gates 2, 3, 4 & Temple close at 5:00 PM

Gate #5 closes at 6:30 PM

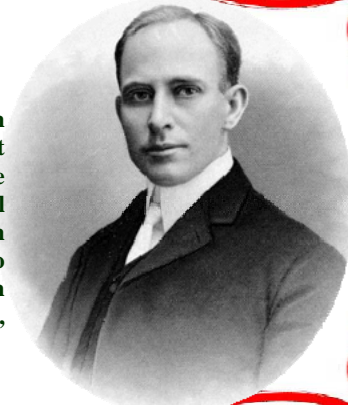
Gate #6 (44th St.) closes at 6:30 PM

Gate #1 (Main St.) closes at 7:00 PM

### FAMOUS FOLKS BURIED IN EVERGREEN

#### Henry J. Klutho (1873 - 1964)

Henry Klutho was a nationally recognized architect known for his Prairie School style of Architecture which was first promoted by Frank Lloyd Wright. He came to Jacksonville after the 1901 fire because he saw it as a wonderful opportunity to rebuild a city. One can recognize his style in many of the older buildings in downtown Jacksonville. Two of the buildings he designed are the St. James Building which City Hall is housed in and the original Morocco Temple, now Cecil W. Powell & Co.



### Senior Citizen Day is 21st August



In his Presidential Proclamation (August 19, 1988), President Ronald Reagan said "For all they have achieved throughout life and for all they continue to accomplish, we owe older citizens our thanks and a heartfelt salute. We can best demonstrate our gratitude and esteem by making sure that our communities are good places in which to mature and grow older."



Remember  
most  
schools  
start this  
month.

Please  
drive  
carefully.

